

2016

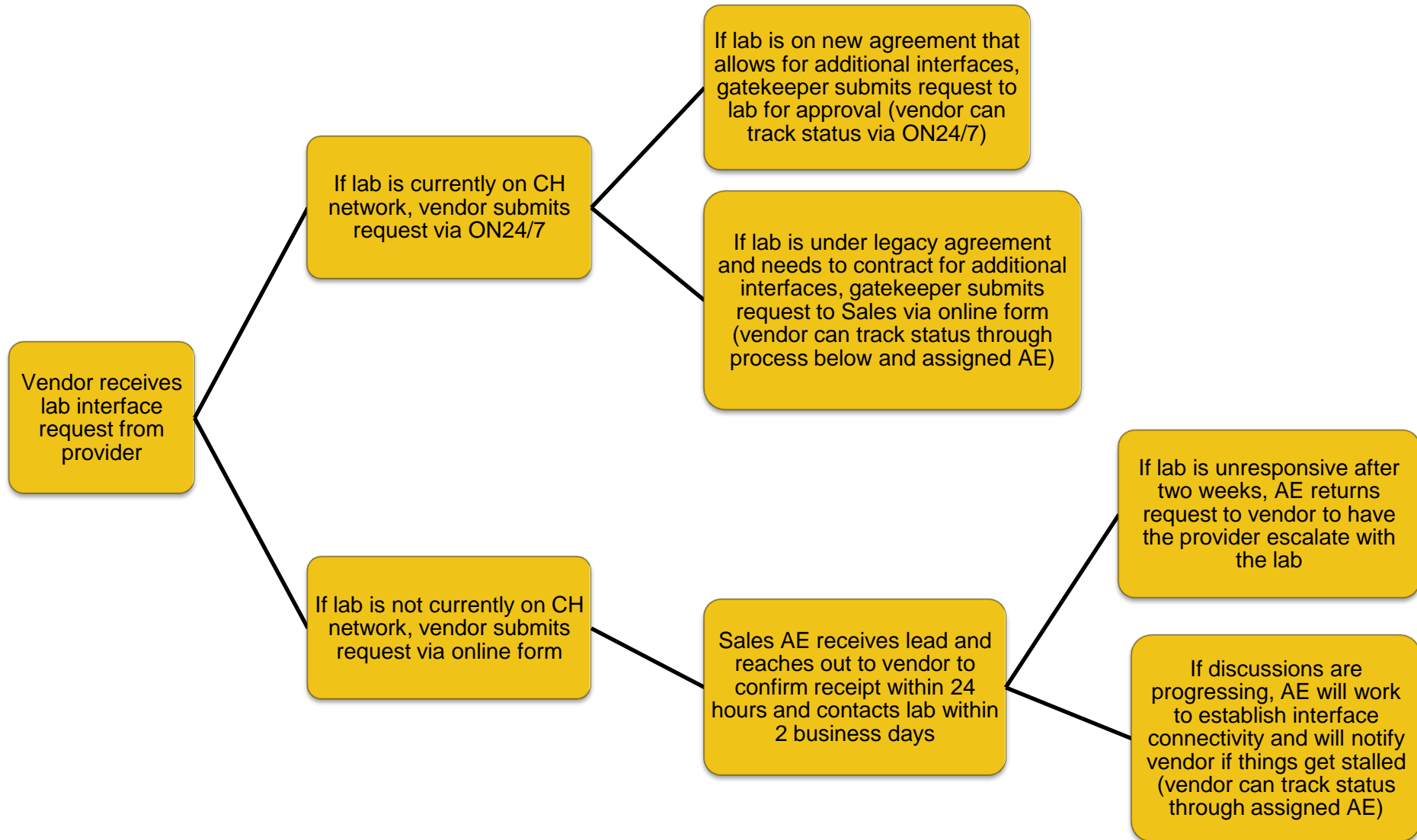
---

# CHANGE HEALTHCARE

**Vendor Lab Interface Requests / CH Lab Sales Processes**

Quick Reference Guide

# Vendor Lab Interface Request Process



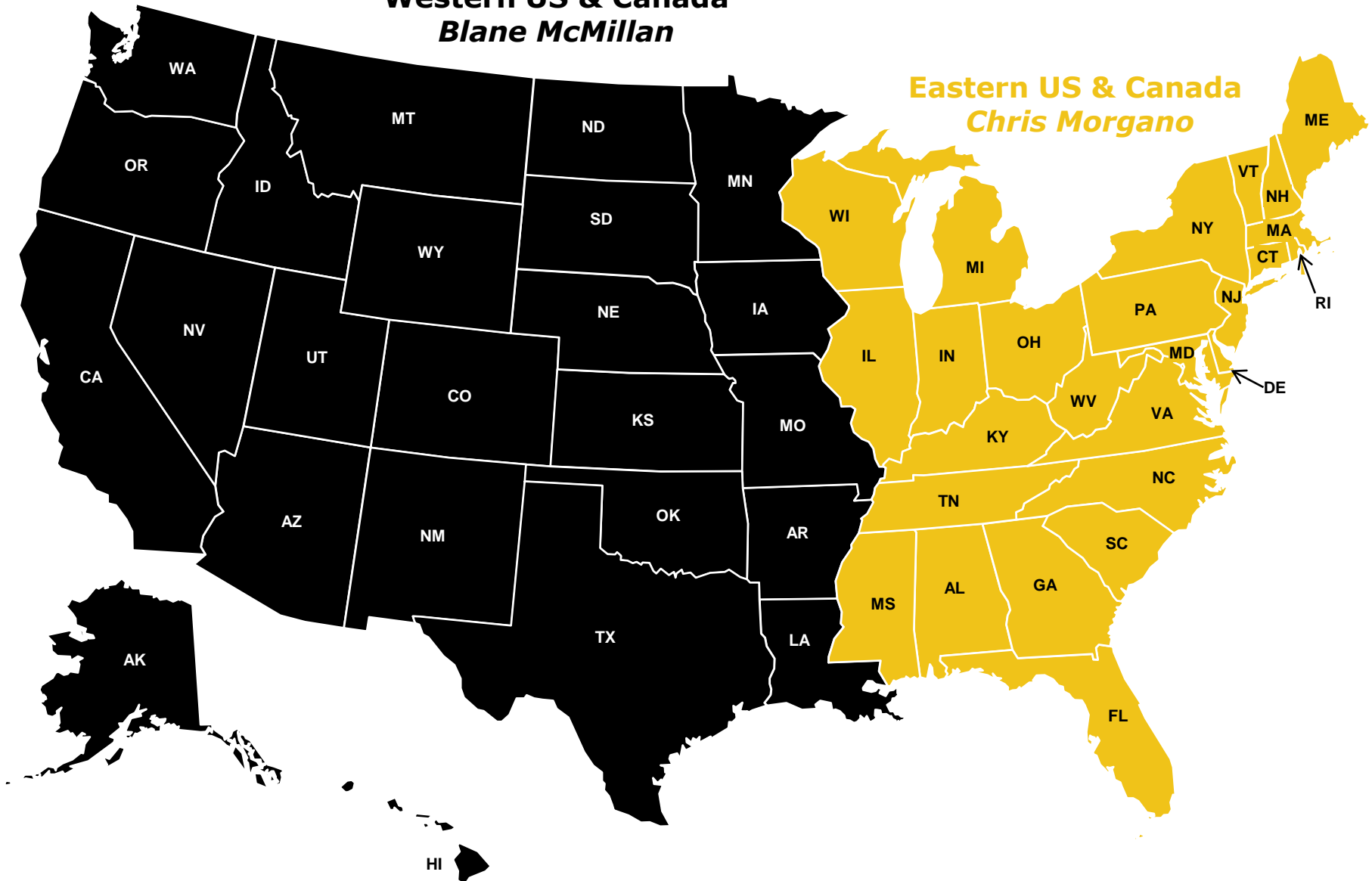
# Lab Request Form Link (for labs not currently on CH network)

<http://discover.changehealthcare.com/LP=298>  
OR  
[www.emdeon.com/labrequests](http://www.emdeon.com/labrequests)

# Lab Sales Territory Map

**Western US & Canada**  
***Blane McMillan***

**Eastern US & Canada**  
*Chris Morgano*



# Key Contacts

- **Ongoing vendor engagement, network and process updates, marketing materials**

Megan Smolka

615.829.2313

[msmolka@changehealthcare.com](mailto:msmolka@changehealthcare.com)

- **Lab Sales, Eastern US & Canada**

Chris Morgano

516.874.4656

[cmorgano@changehealthcare.com](mailto:cmorgano@changehealthcare.com)

- **Lab Sales, Western US & Canada**

Blane McMillan

214.763.5253

[bmcmillan@changehealthcare.com](mailto:bmcmillan@changehealthcare.com)