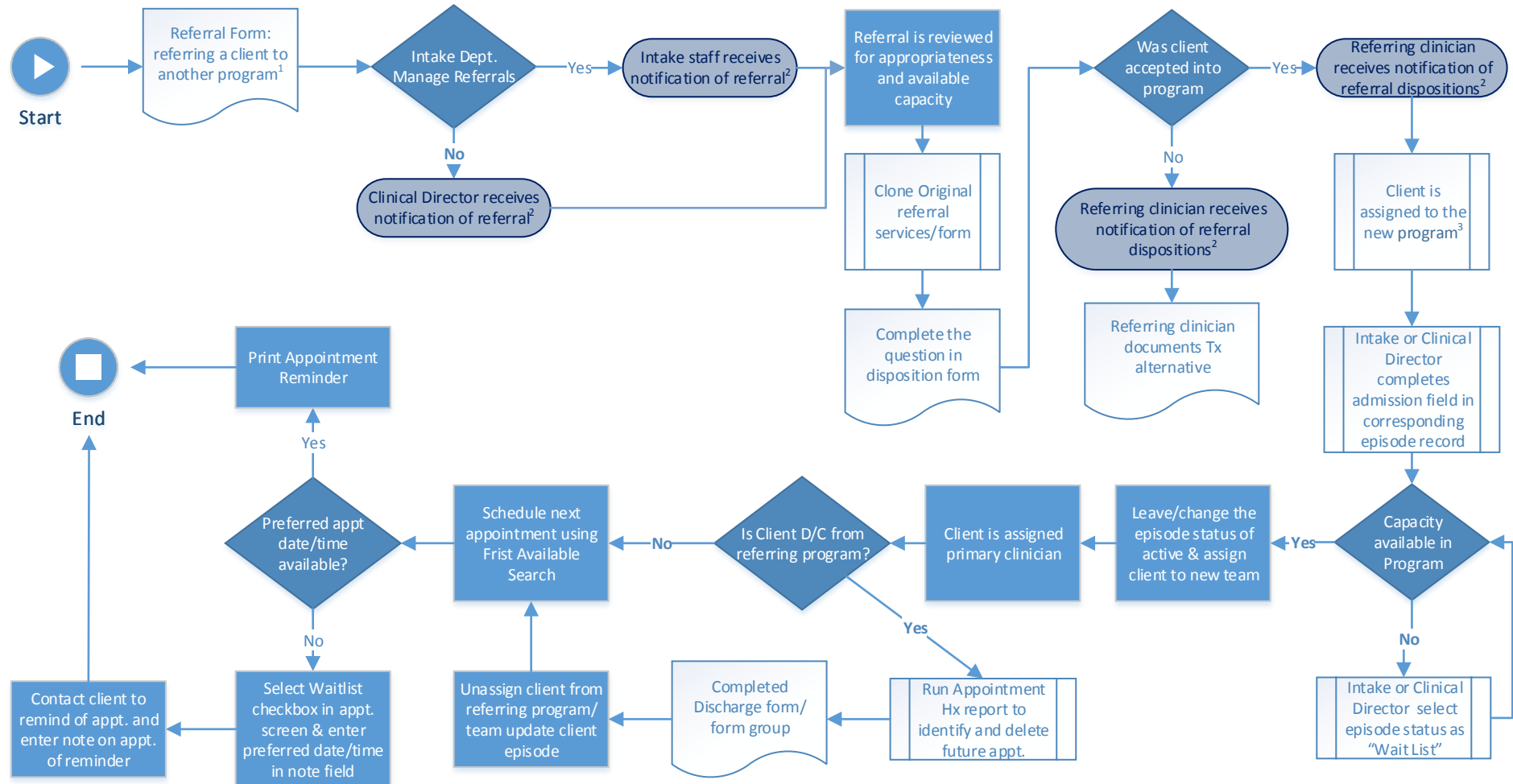


Team: TBD

Program: Outpatient, Inpatient, Community

Security Matrix Role: Clinician / Case Manager / Doctor / Supervisor



## Legend



## NOTES

1. The Referral form should be flagged as a non billable service in the billing matrix
2. Referral Form set up for Notification Triggers on specific form answers to go to relevant staff
3. Best practice is to force team assignment upon Program assignment