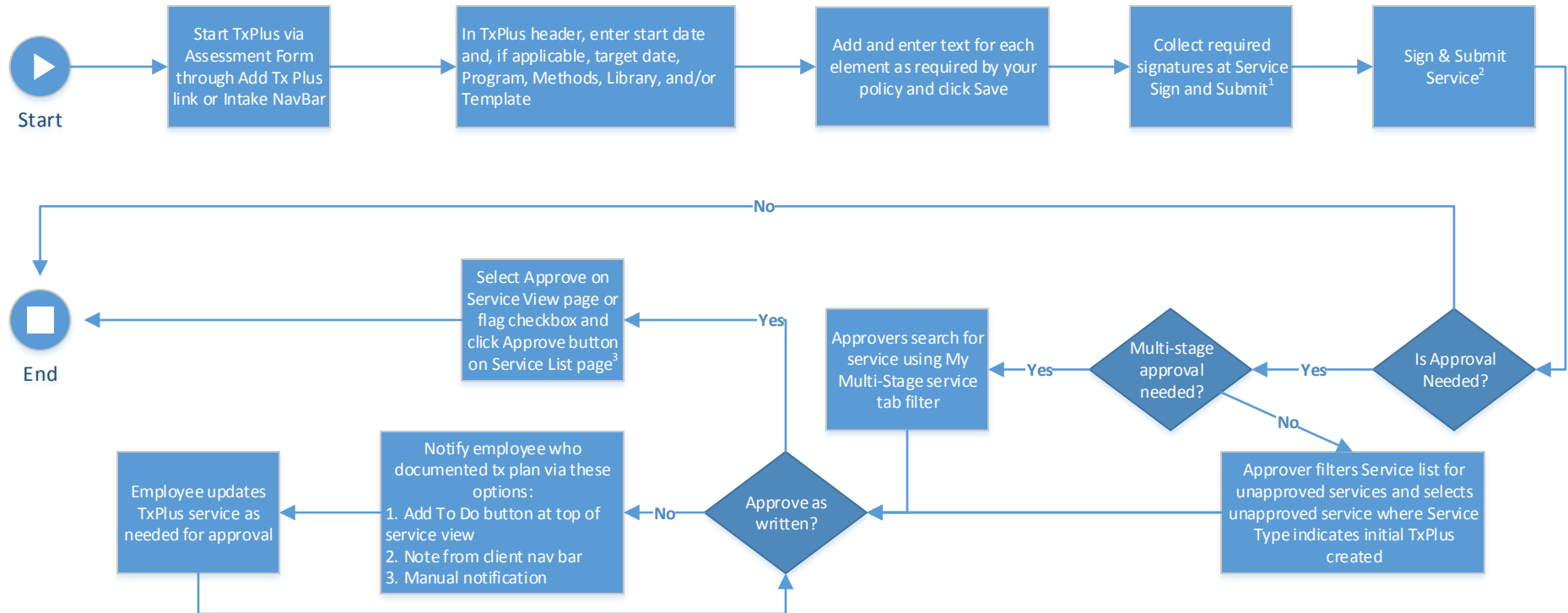


Team: TBD

Program: Outpatient, Inpatient, Community

Security Matrix Role: Clinician / Case Manager / Doctor / Supervisor



Legend



NOTES

1. Signatures on Service with TxPlus are considered signatures on the plan
2. Sign and Submit can trigger notifications to designated staff to revisit plan after specified time period. To do this, Notification Trigger must be set before service begins